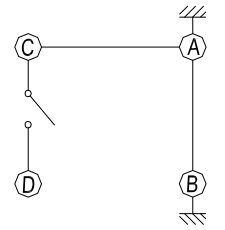
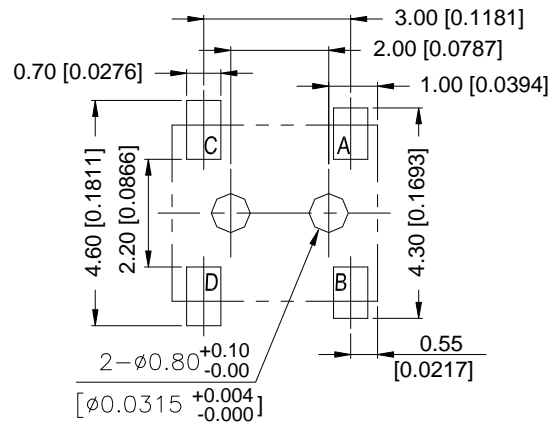
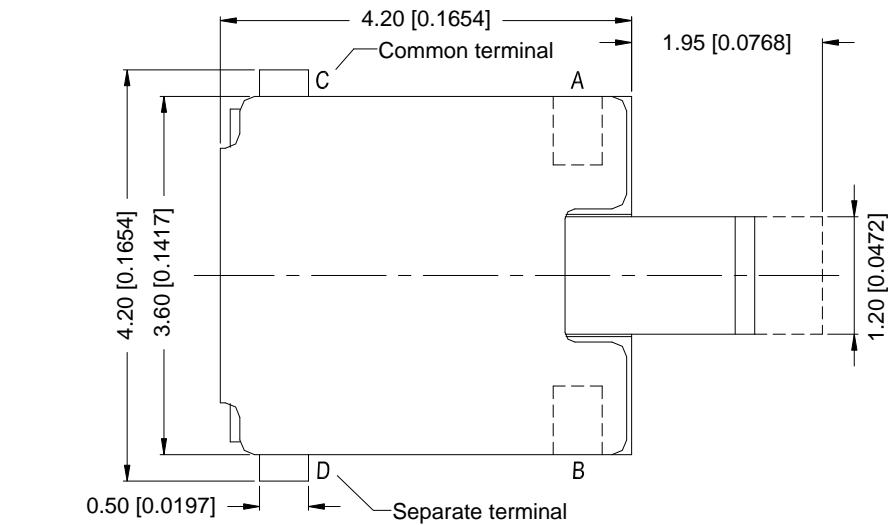


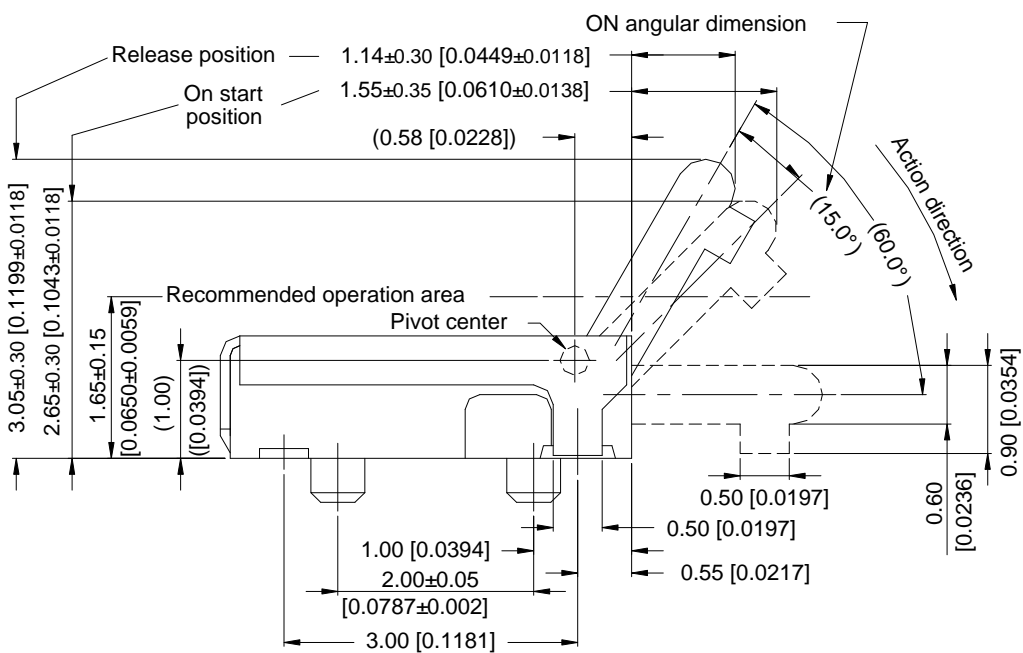
TU SERIES

DIMENSIONS

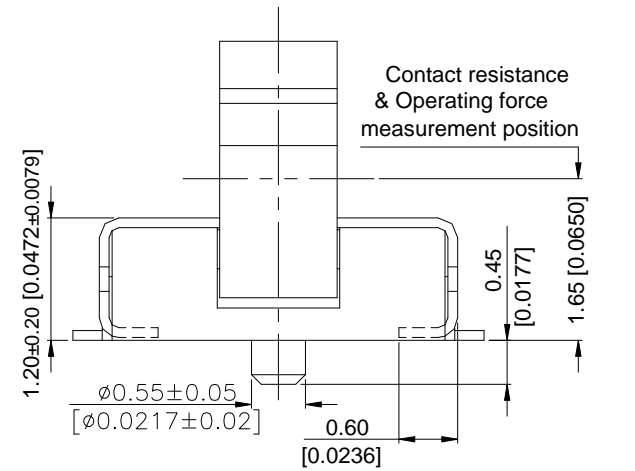
TU-UCF-V



CIRCUIT DIAGRAM



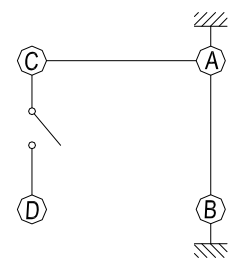
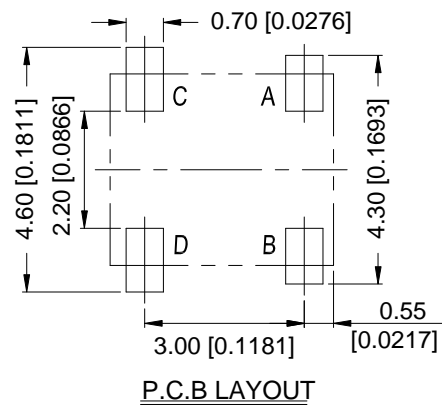
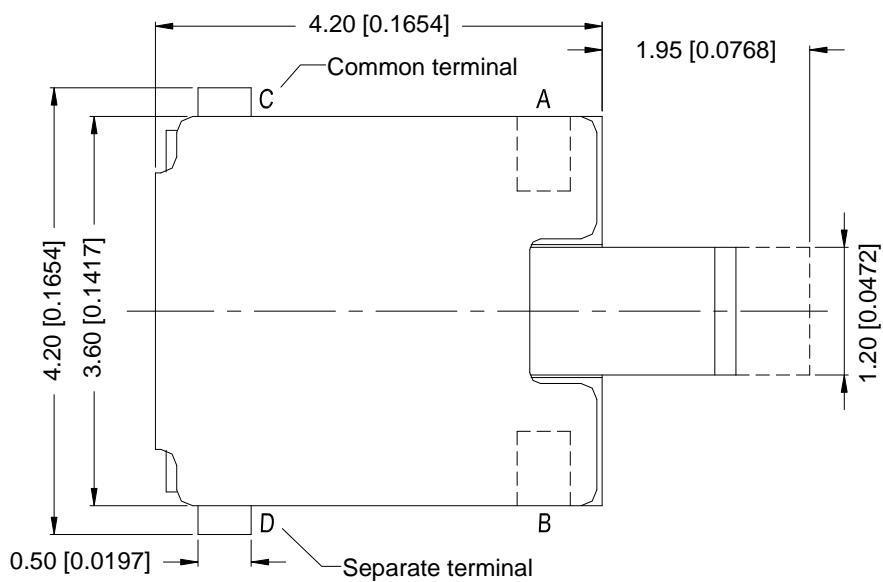
P.C.B LAYOUT



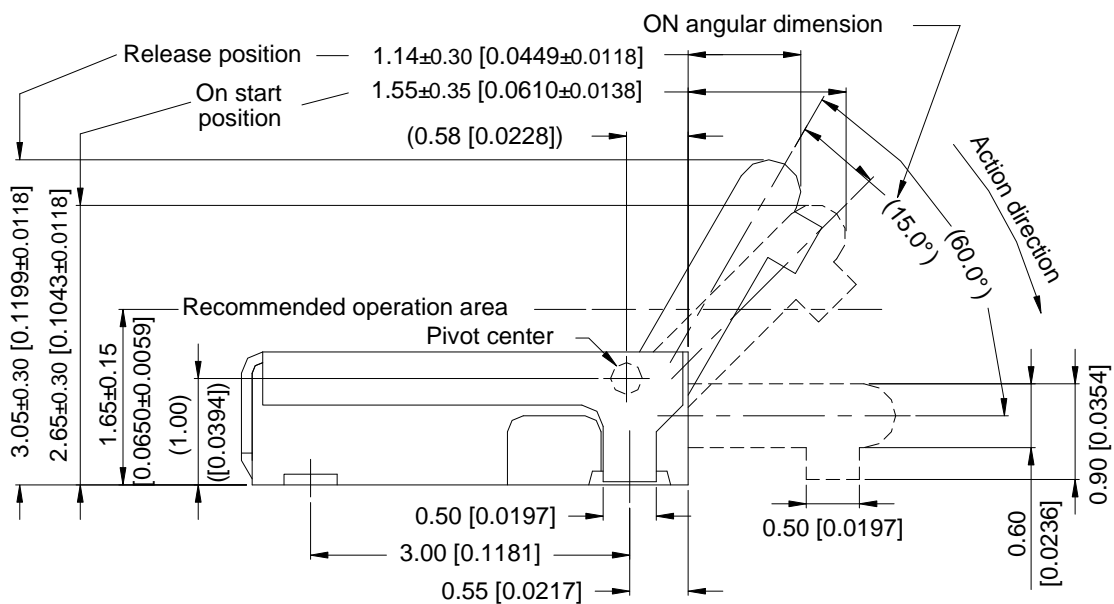
Contact resistance & Operating force measurement position

General Tolerance : ±0.2mm.

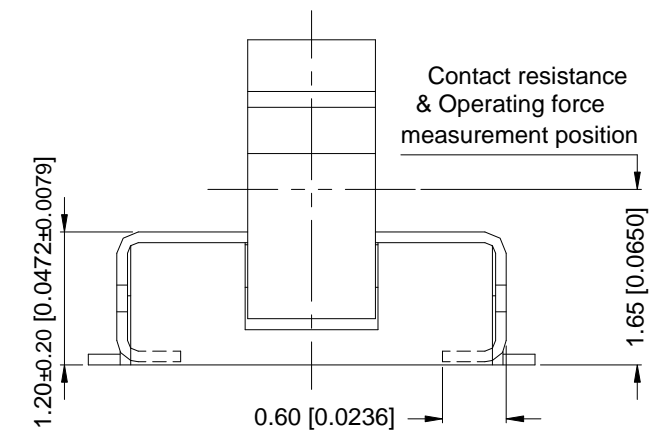
TU-UF-V



CIRCUIT DIAGRAM



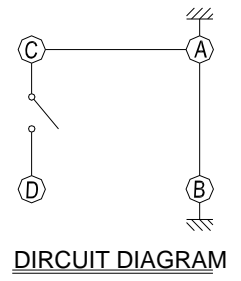
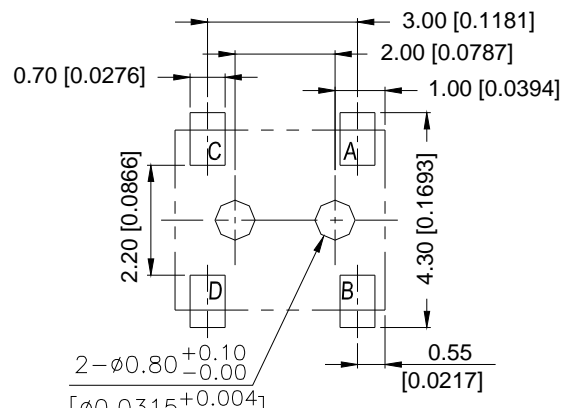
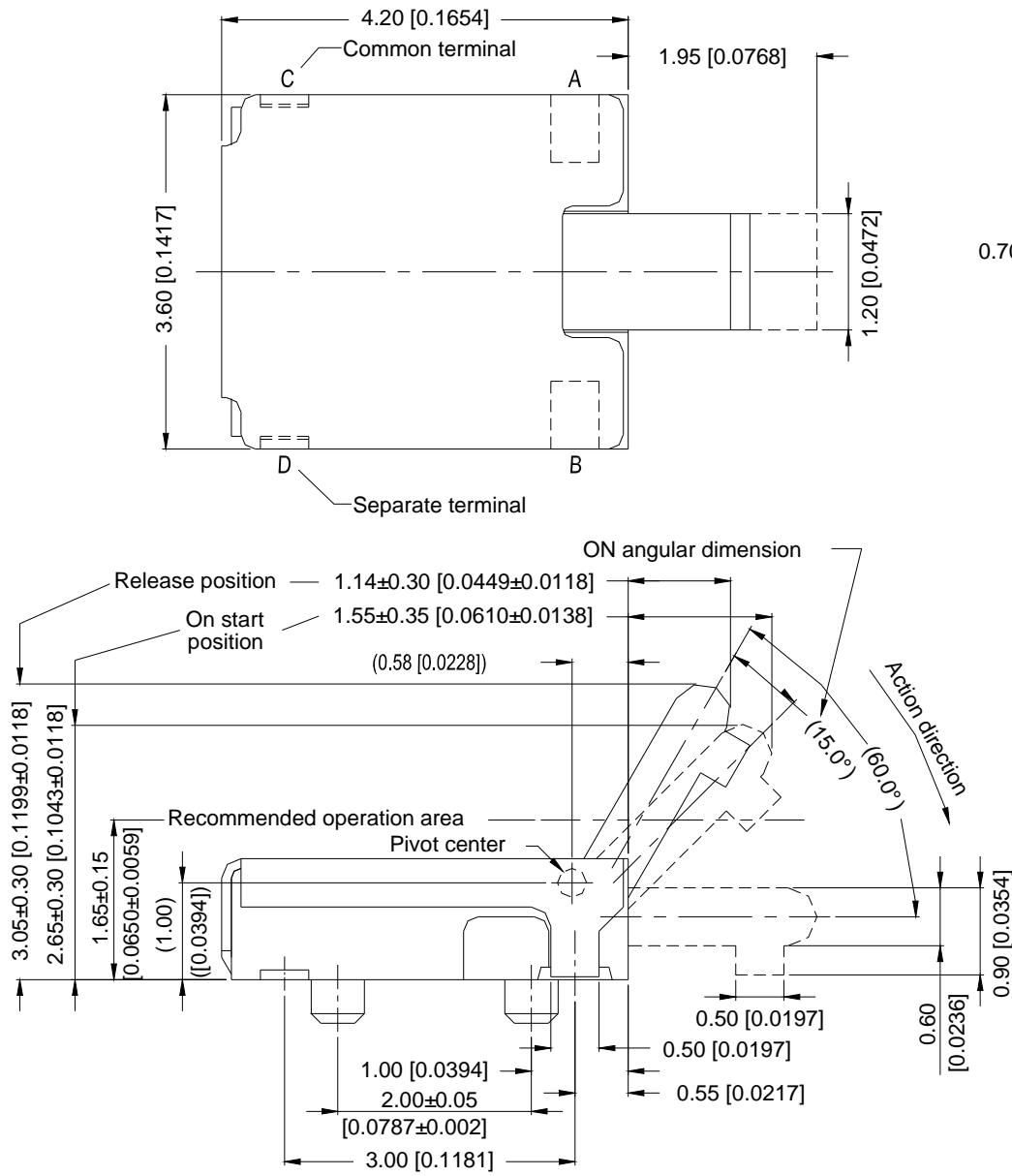
P.C.B LAYOUT



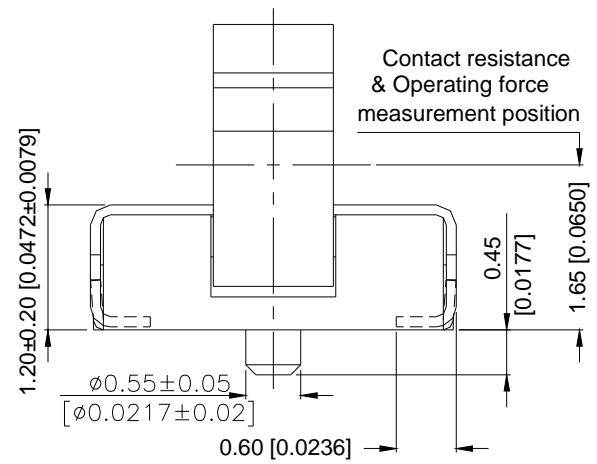
Contact resistance & Operating force measurement position

General Tolerance : ±0.2mm.

TU-UCL-V

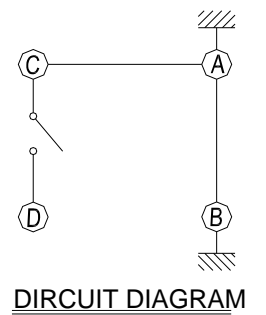
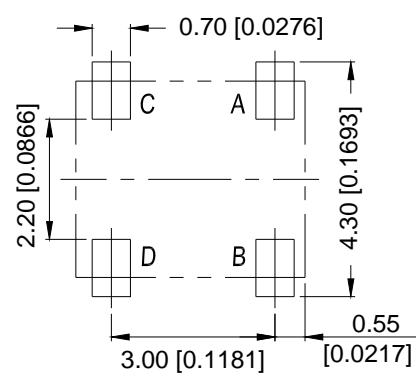
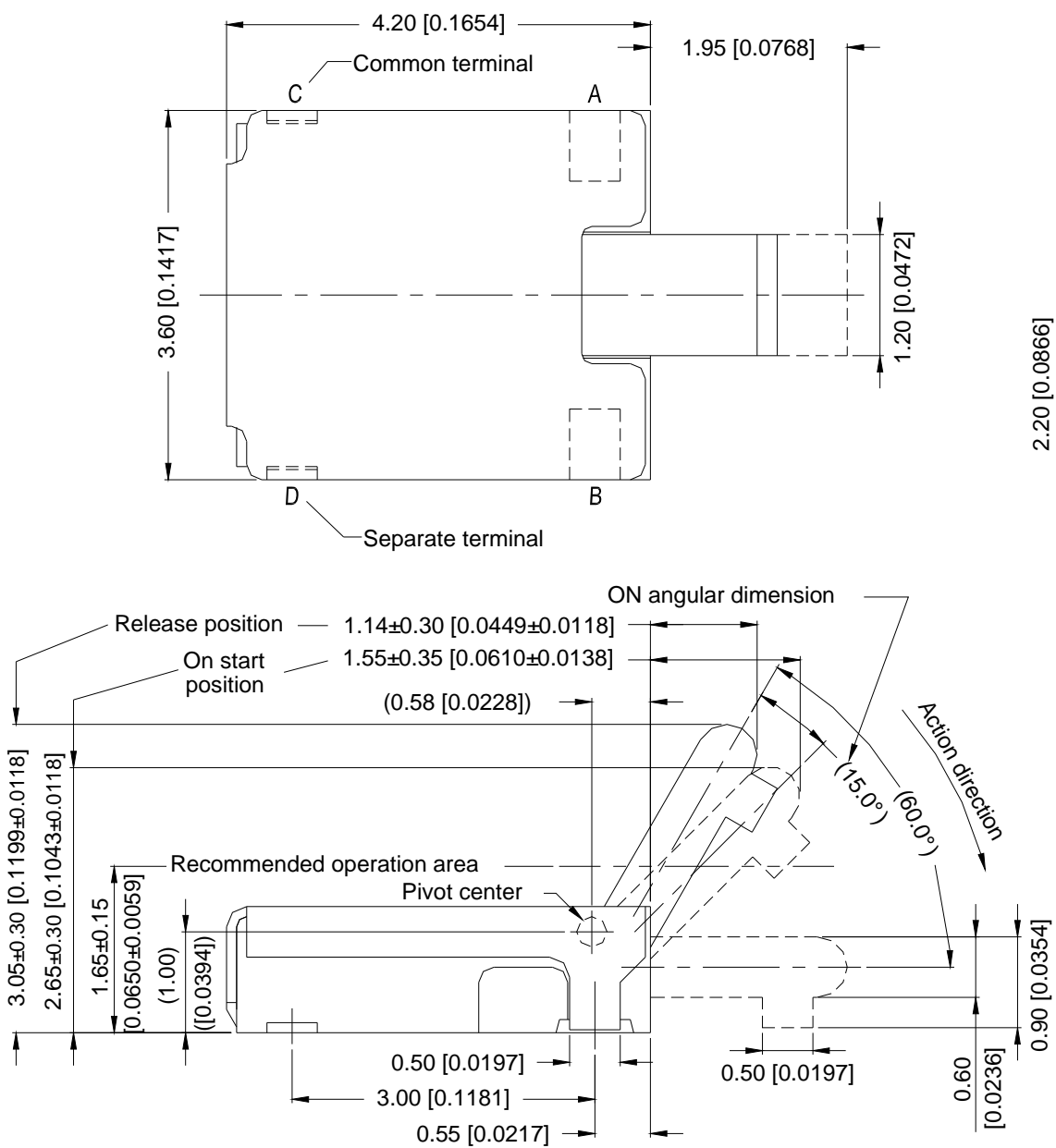


P.C.B LAYOUT

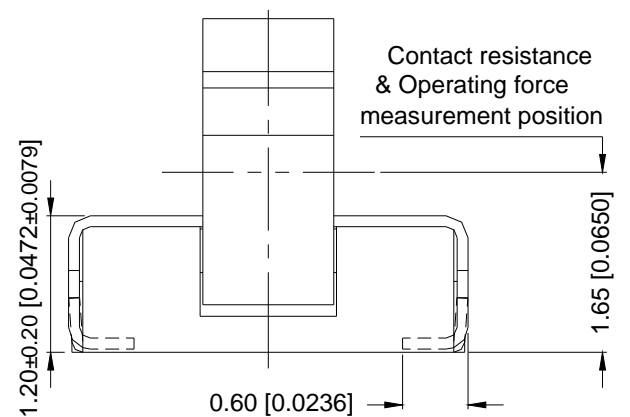


General Tolerance : ±0.2mm.

TU-UL-V



P.C.B LAYOUT



General Tolerance : ±0.2mm.

HOW TO ORDER

T U - U □ □ - V - □

- Package :
T/R = Tape & Reel
- V = Lead Free Solderable
- Terminal Type :
F = With Flat Terminal
L = With Bending Terminal
- C = With Post
□ = Without Post
- U = Up lift
- Detector Switch

SPECIFICATION

△MECHANICAL

Mechanical Life: 50,000 operations.
Operation Force: 40gf max.
Operation Temperature: -10°C to +60°C
Storage Temperature: -20°C to +70°C

△ELECTRICAL

Electrical Life: 50,000 cycles.
Rating: 1mA, 5VDC
Contact Resistance: 1Ω max.
Insulation Resistance: 100MΩ min
Dielectric Strength: 100V AC/1 minute.
Contact Arrangement: 1pole 1throw

MATERIAL

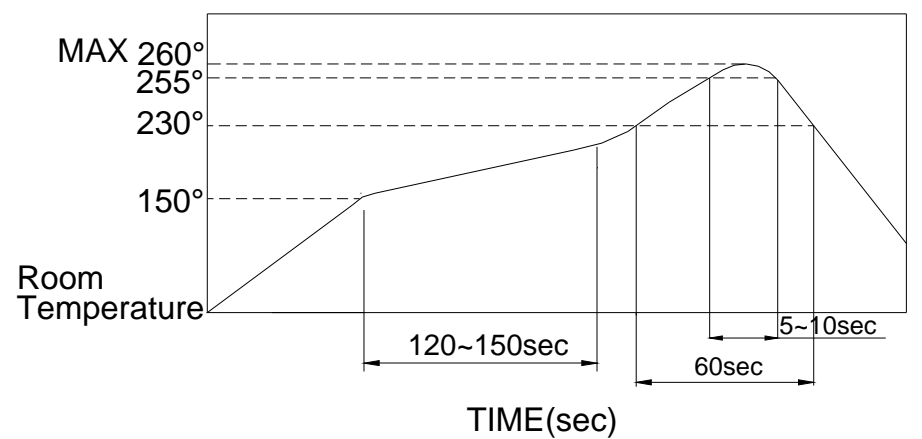
- △COVER : Nickel Silver
- △STEM(1) : UL94V-0 PA9T High-Temp Thermoplastic.
Color: Black.
- △STEM(2) : UL94V-0 PA9T High-Temp Thermoplastic.
Color: Black.
- △CONTACT : Alloy Copper , gold plated.
- △BASE : UL94V-0 PA9T High-Temp Thermoplastic.
Color: Black.
- △TERMINAL : Brass , gold plated.
- △SILICONE : SILICONE
Color: Black.

SOLDERING PROCESSES

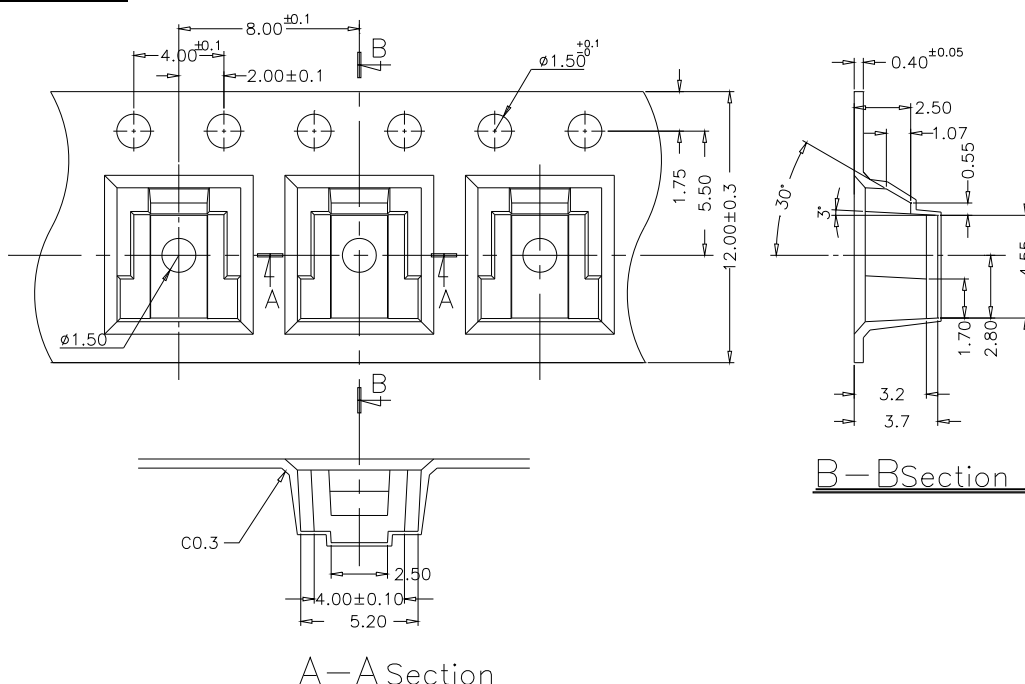
△HAND SOLDERING : Use a soldering iron of 30 watts, controlled at 350°C approximately max 5 seconds while applying.

△REFLOW SOLDERING: When applying reflow soldering, the peak temperature or the reflow Oven should be set at 260°C max.

△Reflow Temperature Profile:



PACKING



Part Number	Number Per Tube	Number Per Reel
TU-□□□-V	-	2300

General Tolerance : ±0.1mm